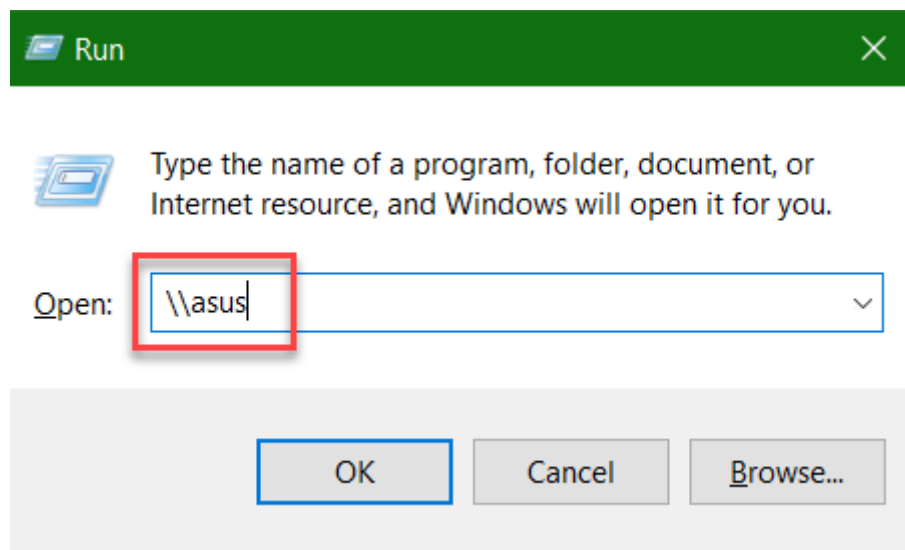
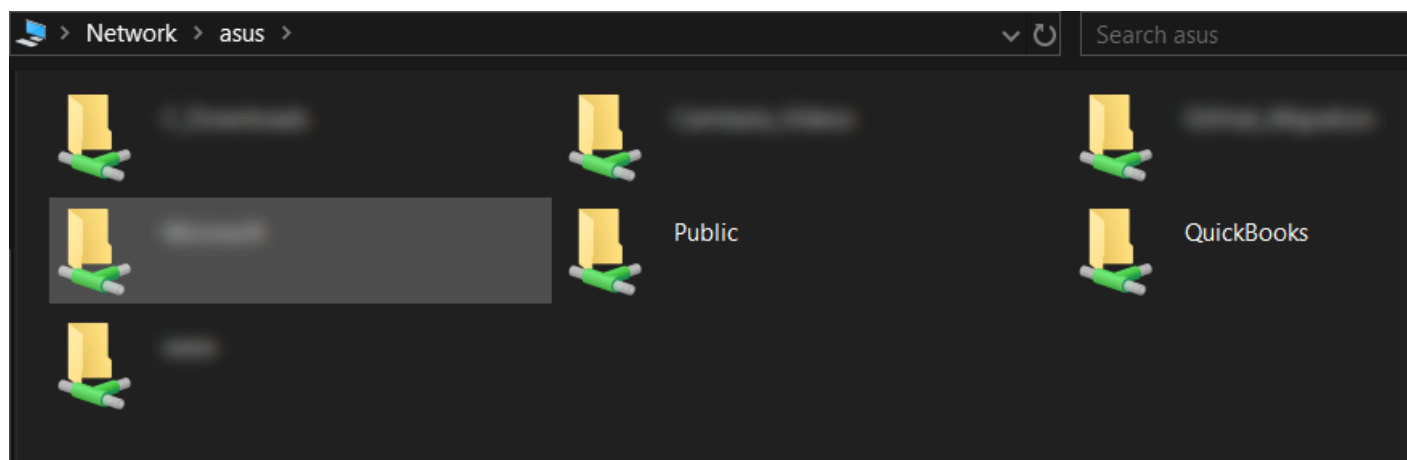
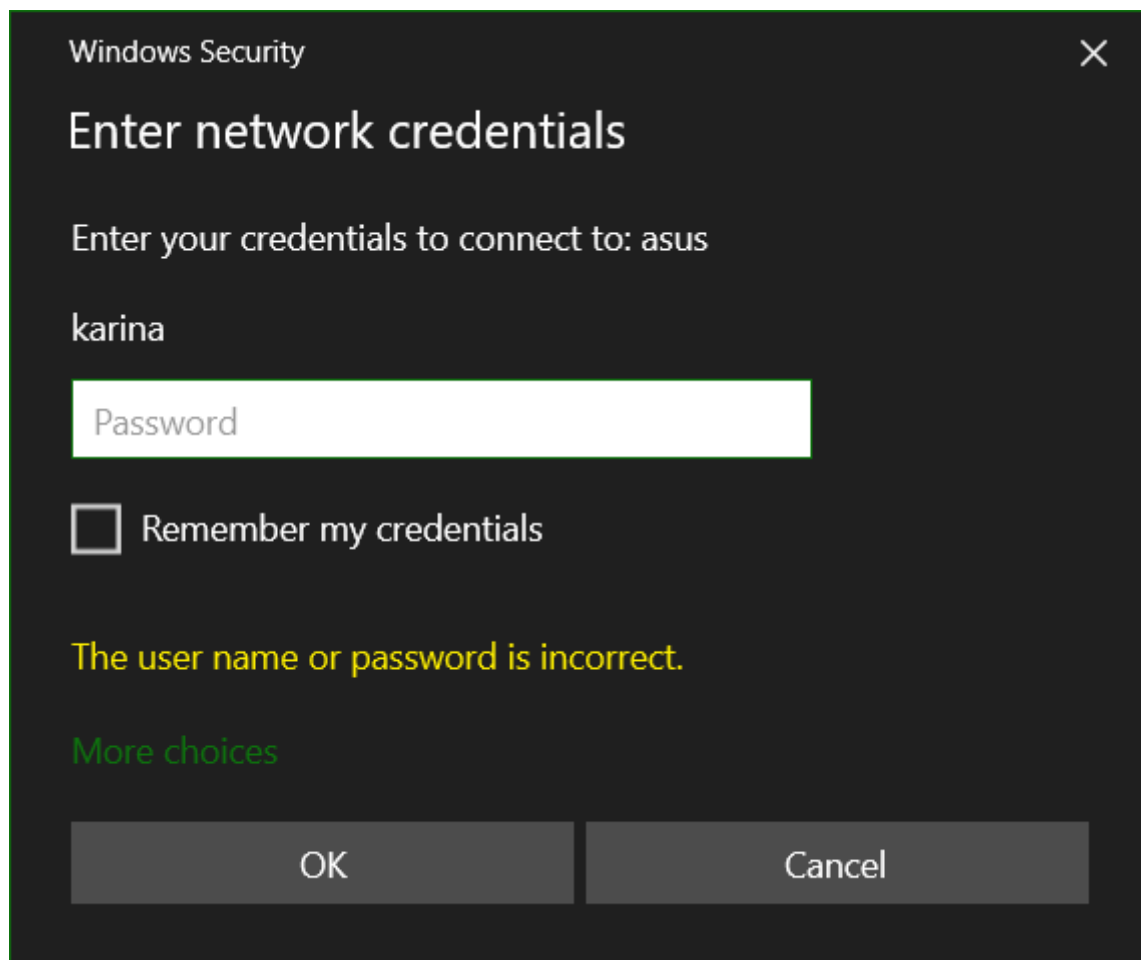


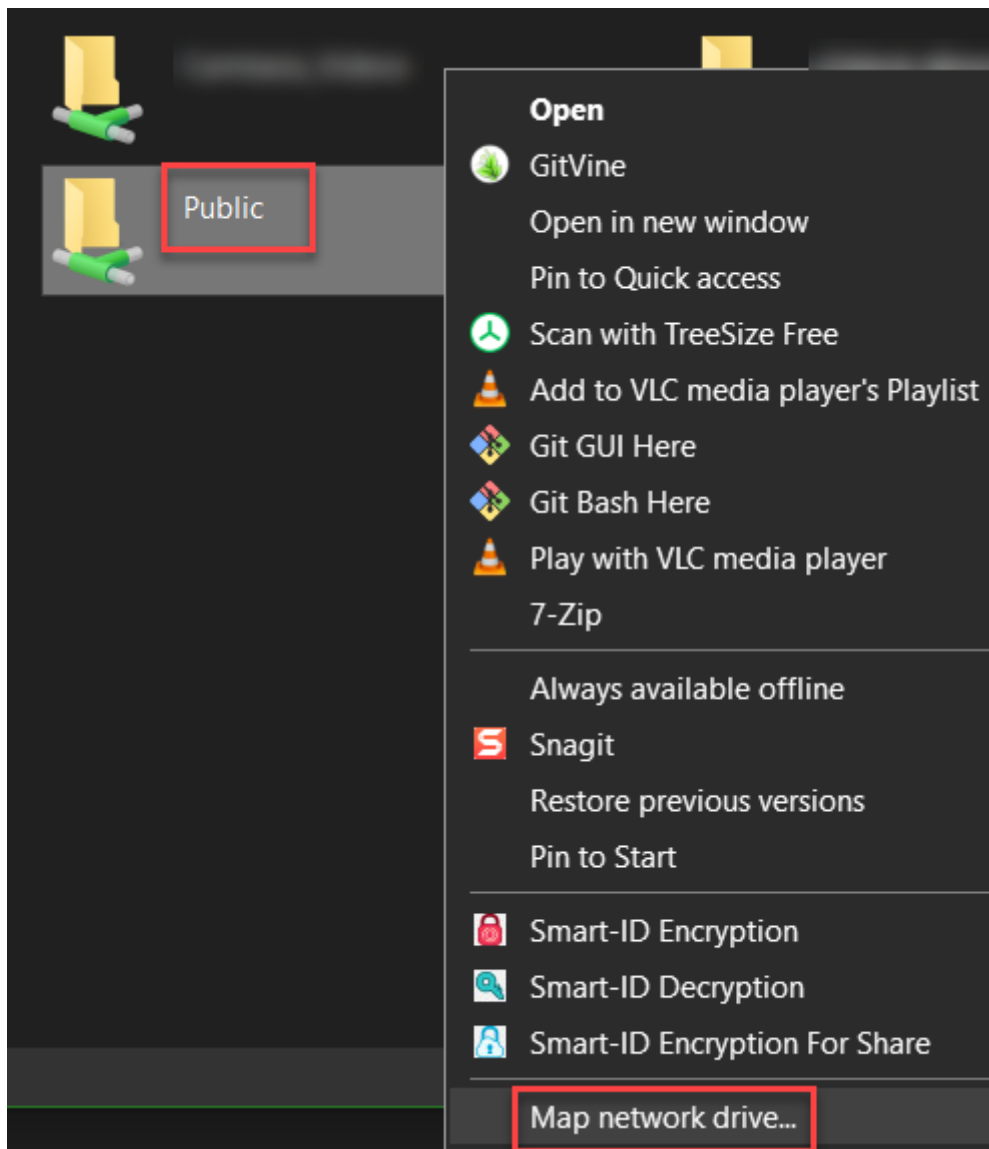
# Networking

## Network Drive

Windows









## What network folder would you like to map?

Specify the drive letter for the connection and the folder that you want to connect to:

Drive:  

Folder:  

Example: \\server\share

☒ Reconnect at sign-in

☐ Connect using different credentials

[Connect to a Web site that you can use to store your documents and pictures.](#)

Finish

Cancel

✓ Devices and drives (3)



OS (C:)  
111 GB free of 222 GB



Dane-Karina (D:)  
718 GB free of 931 GB



USB Drive (I:)

✓ Network locations (3)



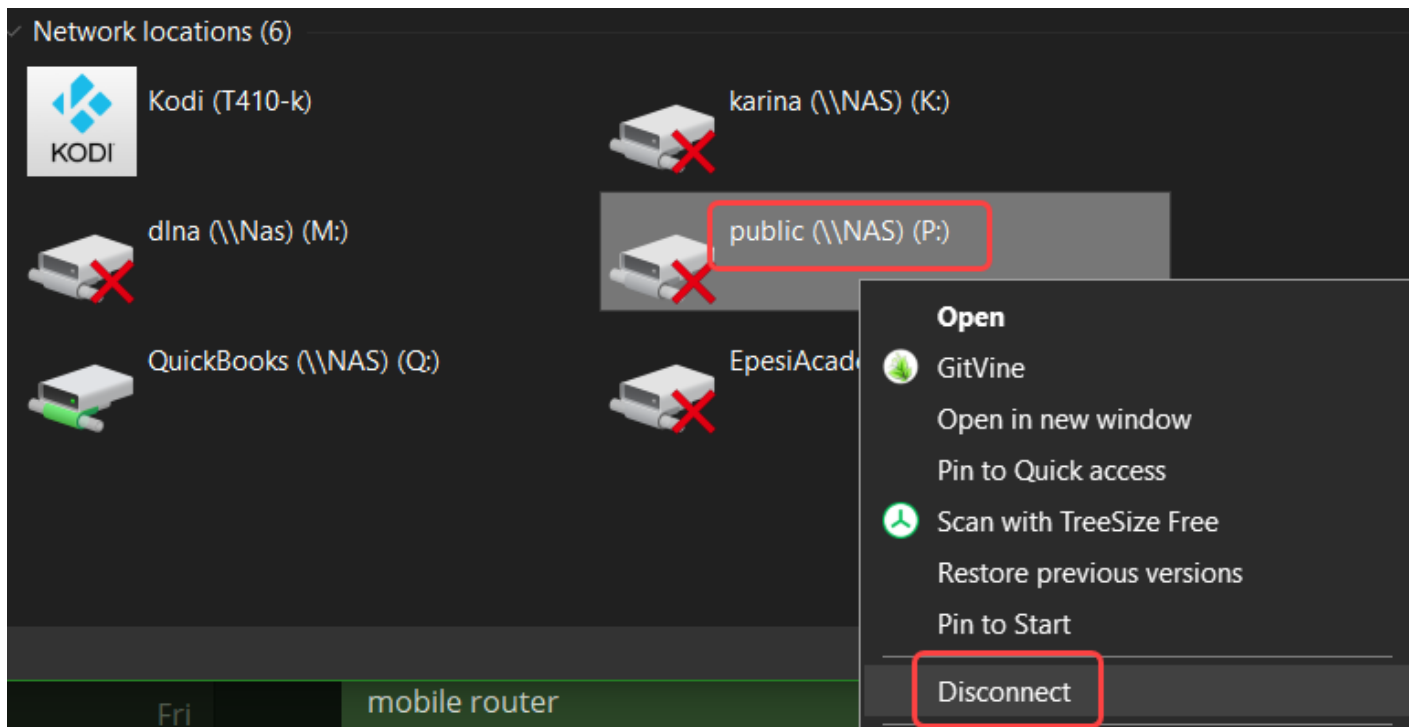
Kodi (T410-k)



Public (\\asus) (P:)  
123 GB free of 931 GB



QuickBooks (\\asus) (Q:)  
123 GB free of 931 GB



Revision #3

Created 22 February 2025 22:44:45 by Karina Tylek

Updated 22 February 2025 23:39:53 by Karina Tylek